



#iwill Fund Young Evaluators Network Application Pack January 2025

Proudly supporting
youth social action



Department
for Culture,
Media & Sport



YMCA
GEORGE WILLIAMS
COLLEGE

WHAT IS THE #IWILL FUND?

The #iwill Fund is made possible thanks to a £66 million joint investment from The National Lottery Community Fund and the Department for Culture, Media and Sport (DCMS) to support young people to access high quality social action. The #iwill Fund supports the aims of the #iwill movement - to make involvement in social action a part of life for young people, by recognising the benefit for both young people and their communities.

What is
'Youth Social
Action'?

Youth social action refers to activities that young people do to make a positive difference to others or the environment. There are lots of ways in which young people can take practical action to make a positive difference. It can take place in a range of contexts and can mean formal or informal activities. These include volunteering, fundraising, campaigning or supporting peers.



WHAT IS THE YOUNG EVALUATORS NETWORK?

The Young Evaluators Network (YEN) is a group of young people who play a key role in shaping all aspects of the evaluation of the #iwill Fund, from designing research tools to primary data collection and analysis. The first members of the YEN were recruited in June 2023, and we are now looking for up to five more YEN to join the group. YEN members are aged 14-18 when they join and have direct experience of youth social action activities.

The Young Evaluators Network works with the College to:

- **Learn research and evaluation skills**

You will learn about different data collection and analysis methods, data collection tools, and collect and analyse data.

- **Work alongside professional evaluators**

Work alongside our team to co-design and lead research with young people and communities. You can help us to ask the right questions, provide new perspectives, and explain evaluation findings to others.

- **Gain opportunities for personal development**

Access skills training, dedicated support, and valuable experience. This may include speaking at meetings, sharing your work and learning at external events, report writing, and sharing blogs and training with others.

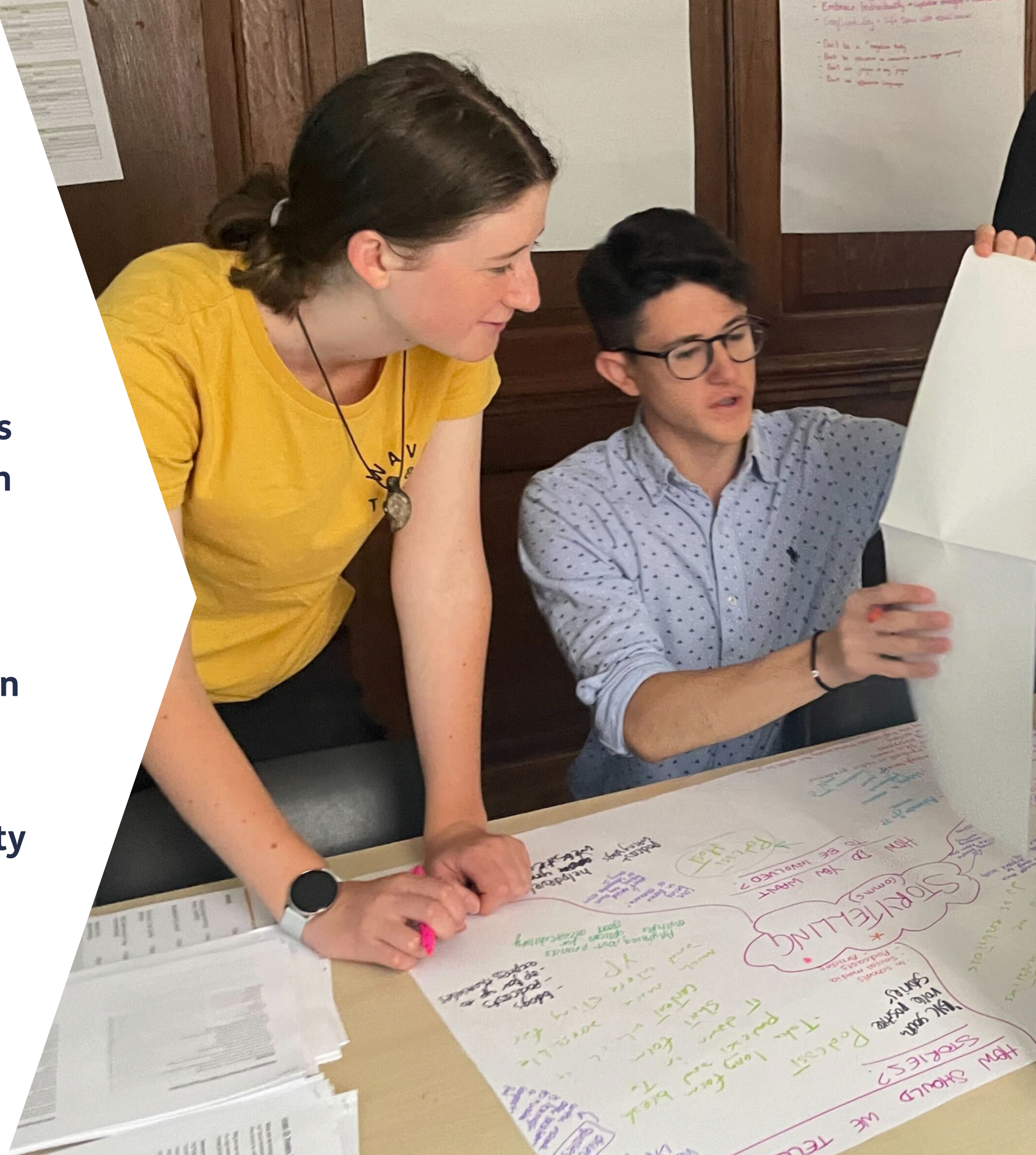


By including young people in research and evaluation, organisations can benefit from a greater range of viewpoints that allow them to come to more informed conclusions. Young people are essential when research involves working with or presenting data to other young people, as they can help ensure it is kept relevant to this sort of audience. Getting young people involved also helps them develop their skill set so they can contribute more in the future.

Through the Young Evaluators Network, I've been able to meet young people from across the UK that are involved in a wide range of social action projects. People tackle all sorts of issues both by individual action and as part of a team. This has given me ideas of how I can improve society through my involvement in social action.

'A'

Young Evaluator



ABOUT THE EVALUATION

YMCA George Williams College has partnered with Dartington, Ipsos and Renaissi-TSIP to see if the #iwill Fund has achieved some of the things it set out to.

This evaluation will explore:

- If #iwill Fund projects have made a difference for young people and their communities.
- If support from the #iwill Fund has helped organisations and delivery partners across the #iwill movement.
- The most effective ways for funders and delivery organisations to measure the impact of youth social action.
- If opportunities provided by the #iwill Fund help young people develop their interest in youth social action.
- Some of the ways organisations can demonstrate this over time and what the role of youth voice is in ensuring the quality of youth social action.

What is an evaluation?

Evaluation involves collecting and analysing information (data) about a project or programme to see if it has made a difference.

WHO WE'RE LOOKING FOR

The College is supporting up to ten young people as part of the Young Evaluators Network (YEN) to help steer an evaluation of the #iwill Fund. We have an existing group of committed and welcoming YEN, and we are now looking to add a few more members to the group. We will organise online sessions and a residential for the YEN to provide training, advice, and support. We hope you'll learn a lot, have lots of fun and make new friends who share your passion for research and evaluation of youth projects!

We're looking for:

A diverse range of young people from across England

Young people aged 14-18

Young people that have been actively involved in youth social action activities



We're particularly interested in hearing from young people who believe in equality and fairness, like to share their ideas, want to learn how to do research and analyse data, enjoy working as part of a team, and want to influence how youth social action is delivered in the future.

The thing that drew me to the panel was the power of reflection. With this evaluation, we will be able to set a national standard for youth social action projects. This ensures that young people are at the heart of every project and that we're not just targeting the same groups each time.

Young people aren't just the leaders of tomorrow, we're the leaders of today! Equipping young people with the right skills now ensures that the world tomorrow will be a much fairer place. It's essential that we create space for different types of experiences before making decisions that affect young people. Nothing about us without us!

Claire

Young Evaluator, 2021



WHAT WE WILL ASK FROM YOU

We ask that you commit to being a member of the YEN from February 2025 – September 2026 (there will be very little asked of you during May and June as we know lots of you will have exams!). This is what you can expect to be doing:

Meet new and existing YEN members (online)	February / March 2025 2.5 hours	<p>Online session (1.5h) for new YEN members to meet each other and existing YEN members and be introduced to the project. This will also be an opportunity to ask all the questions you have.</p> <p>By the end of March, we will support you to develop a short development plan to ensure you get everything you want from taking part in this project.</p>
Mentoring support from existing YEN.	On joining the project 1 hour	We have several experienced YEN members who are excited to guide new YEN members into the project, contribute to team building initiatives, and provide support.
Ongoing online meetings	Monthly throughout the project 1 hour/month	Regular online session (1h) for YEN members to discuss the evaluation progress and discuss any outputs like reports or blogs and feedback on ongoing work strands.
Residential (face-to-face)	August 2025 (two day event with option to join for one or two nights)	<p>This residential will be about exploring the data we have collected so far in 2025. Sessions at this residential will focus on:</p> <ul style="list-style-type: none"> • Understanding how to analyse data • Exploring the quantitative (numerical) data collected through the data portal designed for this project* • Analysing our own data • Thinking about next steps for the research (e.g. what are we learning, are there any new research questions that are emerging?)



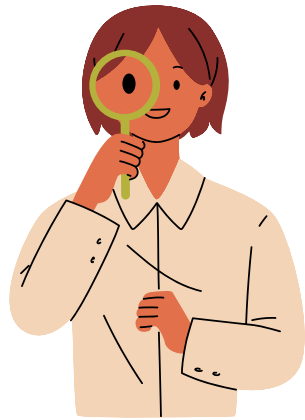
WHAT WE WILL ASK FROM YOU (cont.)

You will be asked to contribute to one or more of the following work strands:

<p>Data collection and analysis (working closely with our partners, Renaisi-TSIP)</p>	<p>March-August 2025 March-August 2026</p> <p>Up to 2 days work/year</p>	<p>During this period, you will receive support and training from us to undertake face-to-face and online qualitative data collection with #iwill funders, delivery partners and young people. Dates for face-to-face site visits are in the process of being arranged, but we expect these to take place in March and April.</p> <p>There will also be an opportunity to contribute to a literature review on the long-term impact of youth social action.</p>
<p>Learning Strand (working closely with our partners, Dartington SDL)</p>	<p>March-September 2025 January-September 2026 (TBC)</p> <p>Up to 2 days work/year</p>	<p>The Learning Strand of the project provides spaces for funders, delivery partners and young people to learn from each other. YEN members can contribute to developing, designing, or delivering workshop sessions (March/April), and a celebration event (September).</p>
<p>Representation and communication of YEN work</p>	<p>When the need arises</p> <p>Up to 2 days work/year</p>	<p>Throughout the #iwill evaluation project, opportunities to represent the YEN and youth voice can arise (e.g. project Leadership Board meetings).</p> <p>We hope all YEN can contribute to a blog or vlog during their time on the project and have produced guidance to support this work.</p>

WHAT WILL I GET FROM TAKING PART?

You will...



Learn about research and evaluation from professionals:

You will work closely with researchers at YMCA George Williams College to help them understand the impact of the #iwill Fund on young people and communities

Develop your knowledge, skills, and experience:

You'll gain valuable skills and experience, including leadership and teamwork, communication, and social research that you can use on your CV and in job applications.



Meet new people:

You'll work alongside other Young Evaluators, the team at the College, and a range of professionals involved in the #iwill Fund. You'll also meet other young people involved in youth social action through your data collection.



Make a difference:

You'll play a key role in learning about and communicating the impact of the #iwill Fund.



Be paid the Living Wage:

You will be remunerated in vouchers (Amazon or Love2Shop) for any activities that would reasonably be defined as work, as well as having all your travel and expenses covered.

HOW TO APPLY

If you would like to apply, please fill in this [short application form](#). This form is in two parts.

Part 1 asks you to provide some key information about who you are. These questions will not be assessed but helps us to build a diverse and balanced team.

Part 2 asks you to upload an application. You can choose to apply in one of two ways:

- a. In writing: A short written statement, 500 words maximum! (Word or PDF file)
- b. Video/audio: Create a short video/sound recording (no more than three minutes long)

If neither of these options work for you, please get in touch with [Dom Weinberg](#), Research Lead, and we will work with you to find the best way for you to apply.

In your written statement or video/audio, we want you to tell us:

- Who you are (your name, where you live, what you are doing in life – are you at school or college or working, or something else?)
- Your experiences of participating in youth social action (with #iwill or beyond)
- Why you want to join the Young Evaluators Network
- What would be interesting for you to learn about the impact of #iwill Fund projects (youth social action projects) on young people and their communities?

HOW TO APPLY

We will assess applications as they are submitted, with a final deadline for applications on 28 February 2025. If you encounter any difficulties applying, please let us know and we will do our best to help.

If you would like to chat about this opportunity before you apply, please get in touch with Dom Weinberg to schedule a friendly call.

What happens next?

- When you apply, we will confirm we have received your application via email.
- Applicants will be shortlisted by our team. We will be selecting people to ensure that there is a range of different experiences and a balanced group in terms of age, gender, and background. We are not solely selecting people on their skills or experience but also their enthusiasm to be involved.
- We'll be in touch with you about your application within two weeks of your application, and at the latest by 7 March 2025.
- To find out more about how your data is stored and processed, please click here.

**Good luck with
your application!**

YMCA
GEORGE WILLIAMS
COLLEGE

youthvoice@ymcageorgewilliams.uk

YMCA George Williams College
10-11 Charterhouse Square
London
EC1M 6EH

T: 0207 046 9400